

130



SEVENTH AVENUE SOUTH

130

SEVENTH
AVENUE
SOUTH

SPACE

Ground: Approx. 2,000 SF
Basement: Approx. 900 SF
Frontage: Approx. 85'

POSSESSION

Arranged

COMMENTS

All uses considered
HVAC in place
Highly trafficked corner
retail in Manhattan's most desirable
neighborhood



NEIGHBORS

Dominique Ansel Kitchen, TMPL Fitness, Morandi, Bobo, Perla Cafe, Fedora, Bar Sardine, Three Lives Bookstore, Empellon Taqueria, Ofrenda, Van Leeuwen Ice Cream, Citipups, INTERMIX, Paul Smith, MAC Cosmetics, Diptyque, and many others!

GAVIOS

REALTY GROUP, LLC

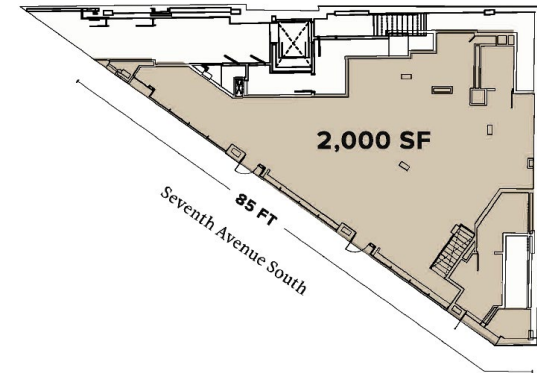
AARON GAVIOS
CHAIRMAN & CEO
aaron@gaviosrealty.com

MARGARET ROYER
DIRECTOR
margaret@gaviosrealty.com

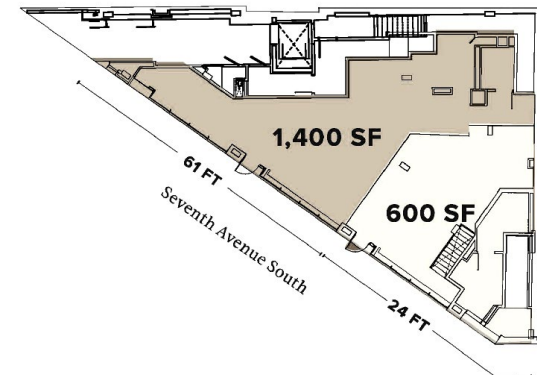
14 PENN PLAZA, SUITE 1800, NEW YORK, NY 10122
TEL: 212.971.0007 | FAX: 212.971.1444
WWW.GAVIOSREALTY.COM

Gavios Realty Group, LLC makes no warranty, expressed or implied, as to the accuracy or completeness of this communication and any attachment. This communication may contain errors and omissions. Nothing herein is binding on any party.

GROUND FLOOR SINGLE-TENANT SCENARIO



GROUND FLOOR MULTI-TENANT SCENARIO



BASEMENT

